

SPECTROPHOTOMETER

SD 4000

*Superior stability and
high correlativity!*



**NIPPON
DENSHOKU**
Advanced Technology in Color and Brightness.



JQA-QM7364



MS
JAB
CM009

ISO9001 : 2008取得



* No PC included

- Measure the reflection and transmittance rate of the sample.
- A variety of sample including solid, liquid, powder, pellet, and film.
- Measure the special rate from 380nm to 780nm by 5nm interval.
- Suitable for the measure the sample with fluorescence by the switchover in or out with the filter.
- Display the measurement data and a variety of graph with the software, Color Mate Pro.
- For the different types of sample, just interchange the aperture size with no need to change the lens.
- Adopt the large sample room with the slide door marking it possible to do the easy measurement.

SPECTROPHOTOMETER SD 4000

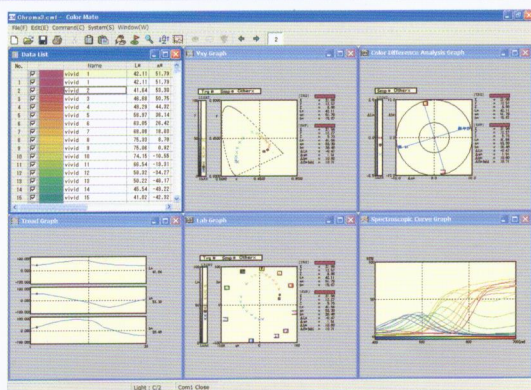
Features

- 1 Measure the special rate from 380nm to 780nm by 5nm interval.
- 2 Suitable for the metallic sample and OCM thanks to SCI and SCE.
- 3 High correlativity with the eyesight for the diffuse light condition.
- 4 Suitable to measure the sample with fluorescence by the switchover in or out with the filter.
- 5 Adopt the large sample room with the slide door marking it possible to do the easy measurement.
- 6 Just interchange the sample size with no need to change the lens.
- 7 Display the measurement data and a variety of graph with the software.

Specifications

Model	SD4000
Illumination & light receiving conditions	[Reflectance] di(de) based on JIS Z8722: 8° post-spectroscopy method [Transmittance] di based on JIS Z8722: 0° post-spectroscopy method
Light receiving element	CMOS linear image sensor(256 pixels)
Wavelength	380nm to 780nm, at 5nm
Light source	Xenon flash lamp
Measuring time	3 seconds Except simultaneous measurements under multiple conditions
SCI/SCE	Automatic change by moto
UV ON/OFF	Automatic change by motor
Measurement area	Aperture change
External output	RS-232C
Power supply	100Vto 240VAC, 50/60Hz
Power consumption	Max. 150VA
Dimensions	316(W)x462(D)x251(H)mm
Weight	Approx. 14kg
Environment for use	15°C to 55°C, 80%R.H.or less, No condensation 1,000 lux or more

Color Mate Pro (Color Management Software)



- 1 Possible to lay out the intended color value and the graph freely and make up the original screen.
- 2 500 for standard data and sample data. Possible to relate the standard data and sample.
- 3 Possible to transfer the data and helpful to analyze the data in your own way.
- 4 Possible to judge whether the difference between the measured sample data and standard data within an allowance or not. The judge will be done by $\Delta L^*a^*b^*$, $\Delta L^*u^*v^*$, and $\Delta LabE$.
- 5 There is some function including searching, rearranging, reading and writing for text file.

OS	Windows 7, Vista, XP(Professional, Home)
Computer	CPU: Recommended more than 2GHz Memory: Recommended more than 1GB Hard disk: Recommended more than 100MB disk space CD-ROM Drive: Computer-readable Display: Recommended more than WXGA(1280x800) and Full color Interface: Built in serial port

Object	Numerical value, Text, Picture, False color, Spectral curve graph, Lab graph, lxy graph, Color deviation judgment graph, Trend graph
Item	Name, Memo, Measurement data, False color, Measurement way, Measurement unit, Geometry, Measurement diameter, Judge, Color system
Color system	Special data(reflectance, absorbance, K/S), XYZ, ΔXYZ , xyz, Δxyz , $L^*a^*b^*$, $\Delta L^*a^*b^*E^*$, $L^*C^*H^*(ab)$, $\Delta C^*H^*(ab)$, u^*v^* , $\Delta u^*v^*E^*$, $L^*C^*H^*(uv)$, $\Delta C^*H^*(uv)$, Lab, $\Delta LabE$, LCH(Hunter), ΔCH (Hunter), u' , v' , $\Delta u'$, $\Delta v'$, HVC, MI, W, WI, ISO, Brightness, YI, APHA, GARDNER, YLW, HLK, ΔB_{CMC} , ΔE^*_{94} , ΔE^*_{00} , ΔE (FMC2), ΔE (AN), Dominant wavelength, purity Discoloration
Observation Condition	(A, B, C, D50, D55, D65, D75, F2, F6, F7, F8, F10, F11, F12) Visual field(2°, 10°)

※For the improvement of the products, we will change the specifications without announcement.

NDK NIPPON DENSHOKU
Advanced Technology in Color and Brightness.

Ⓔ NIPPON DENSHOKU INDUSTRIES CO.,LTD.

HEAD SALES DEPT./ SENGOKU HASEGAWA BLDG., 4-45-17 SENGOKU, BUNKYO-KU, TOKYO 0112-0011 JAPAN

PHONE : 81-3-3946-4392 FAX : 81-3-3946-1690

OSAKA SALES DEPT./ SHIN-UMEDA BLDG., 2-2-1 SHIBATA, KITA-KU, OSAKA 530-0012 JAPAN

PHONE : 81-6-6372-2963 FAX : 81-6-6372-4498



URL : <http://www.nippondenshoku.co.jp>

Ver.01.13.03.29